

# Holzweiler

# Woman standard measurements in cm

Measurement	XS	S	M	L	XL
Shoulder width	38	39	40	41	42
Arm lenght	55	56	57	58	59
Upper width	87	92	97	102	107
Waist	67	72	77	82	87
Fr. HPS to waist	40,5	41	41,5	42	42,5
Hip	91	96	101	106	111
Thigh	56	58	60	62	64
Inseam	79	80	81	82	83
Total lenght	166-168	168-170	170-172	172-174	174-176

Holzweiler	Menswear standard measurements in cm			
Measurement	S	M	L	XL
Shoulder width	43	45	47	49
Upper width	89	95	101	107
Waist	78	84	90	96
Hip	94	100	106	112
Inseam	84	85	86	87
Total lenght	175-180	180-185	185-190	190-195

Holzweiler Besseggen



Measurement	XXS	XS	S	M	L	XL
A. Front length	72	73	74	75	76	77
B. Shoulder to shoulder	47	48	49	50	51	52
C. Sleeve length	63	64	65	66	67	68

Holzweiler

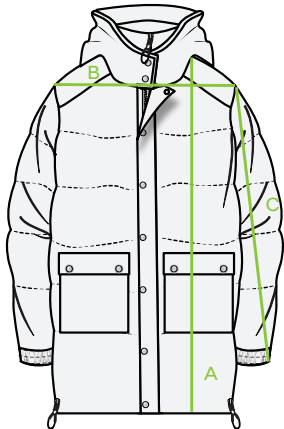
Dovre



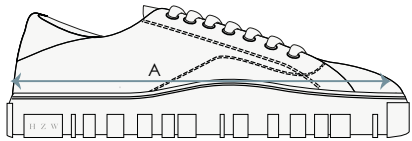
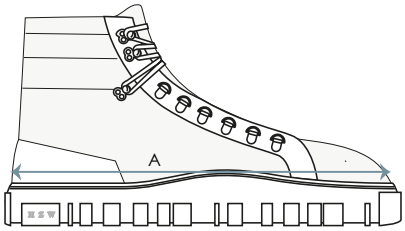
Measurement	S	M	L	XL	XXL
A. Front lenght	74	76	78	80	82
B. Shoulder to shoulder	48	51	53	55	57
C. Sleeve lenght	67	68	69	70	71

Holzweiler

Sol



Measurement	XS	S	M	L	XL
A. Front lenght	83	84,5	86	87,5	89
B. Shoulder to shoulder	43,5	44,5	45,5	46,5	47,5
C. Sleeve lenght	67	68	69	70	71



JAPANESE	22	23	24	25	26	27	28	29	30	31
US	5	6	7	8	9	10	11	12	13	14
EU	36	37	38	39	40	41	42	43	44	45
A: Measurement from heel to toe, in cm.	24,3	24,7	25,2	25,6	26,1	26,6	27,5	28,1	28,6	29,5



JAPANESE	22	23	24	25	26	27	28	29	30	31
US	5	6	7	8	9	10	11	12	13	14
EU	36	37	38	39	40	41	42	43	44	45
A: Measurement from heel to toe, in cm.	24,7	25,2	26,0	26,6	27,5	27,9	28,2	28,6	29,5	30,2



JAPANESE	22	23	24	25	26	27	28	29	30	31
US	5	6	7	8	9	10	11	12	13	14
EU	36	37	38	39	40	41	42	43	44	45
A: Measurement from heel to toe, in cm.	23,3	24	24,7	25,4	26,1	26,8	27,5	28,2	28,9	29,6